



# GPC

## COMPANY PROFILE 2024







## Who We Are

GPC is dynamically active across several mission-critical sectors of the rapidly growing Guinean and broader West African economy, including mining, construction, logistics, and integrated trade.

Established by the Kaba brothers in 2000 and formalised in 2009, GPC is active in the mining, construction, and logistics industries both in Guinea and across West Africa.

Guided by a vision for a prosperous country and a brighter future for the region, our continued growth and success speaks for our ability to undertake and complete large-scale, challenging projects across a range of industries and environments.

Now going into our twenty-fourth year, the company also oversees subsidiaries both wholly-owned and vertically integrated (GPC Mining, BAA Decord, Wolf Guinea), and those under joint ventures.

"We aim to be the primary reference of Guinean quality and excellence as a leading, fully Guinean-owned company." – Amadou Kaba, CEO

### Our Vision

To be the leading partner of choice for clients active in the mining, construction, and logistics sectors, both in Guinea and across the broader West African region.

### Our Mission

Building the future of Guinea and Africa, with optimism and with excellence. We know what we need to do to achieve this, and we know we can deliver. Our countless successful projects and

satisfied clients speak for the value we add.

### Our Values

Our values make us who we are. Over two decades now we have been refining what we want to pride ourselves on, and how we want our people to experience being part of a greater whole, contributing to the future of integrated trade across the region.

Our entrepreneurial culture is anchored by three core values that remain consistent across all our operations and activity:

### Autonomy

People are dynamic, and we celebrate this. Championing autonomy as a core value, we empower our team to innovate and excel in projects while fostering a culture of trust and independent decision-making that drives industry-leading results.

### Commitment

Steadfast in our commitment to excellence, we ensure every project and operation reflects our dedication to quality, safety, and sustainability, setting new standards in our active sectors in Guinea and across the continent.

### Boldness

Challenges are part of life. We face them with the confidence of a lifetime of continued success. Boldness is our guiding principle; it inspires us to tackle the toughest challenges in mining, construction, logistics, and more, with our solution-driven determination helping us shape the future of our industries.

# WHO WE ARE



**Aly KABA**  
Shareholder, Managing Director



**Amadou KABA**  
Shareholder, Chairman and CEO



**Idrissa KABA**  
Shareholder, Deputy Managing Director







## What We Do

### Our Sectors

We are active across some of the most entrenched industries worldwide, bringing resilient and value-adding services to key global movers and nations.

Working with governments and multinationals to action broad scale projects ranging from roads to residential, from gold mines to bauxite extraction, we understand the intricacies of our sectors and we have a commitment to delivery: on-time, on-budget, and proving the excellence of Guinean industry.

### Mining

Creating the bedrock of responsible Guinean resource procurement. Sustainable mining has an enormous role to play in securing Africa's future, and GPC is at the heart of large-scale operations in the sector for many clients.

### Construction

Construction is imperative as part of Guinea's transformation and GPC leads the way in building the future of the nation, undertaking both real estate and civil works projects in the sector.

### Logistics

The world relies on logistics to facilitate modern trade. Connecting Guinea to the global supply chain positions us as a critical part of this infrastructure, and a vital contributor to the broader market.



\$50m

Revenue 2023



1200

Employees





## Creating the bedrock of responsible Guinean resource acquisition.

Our mining services cover all aspects of the operations imperative to proper mine function and prolonged facilitation for full life-of-mine coverage. We always consider our impact and have a strong history of community support in the locations we are active, including local employment and food relief programs.

## Planning & Engineering

Employing a rigorous and holistic top-down integration of our staff and equipment within our sites, we manage an efficient rollout of operational strategy and resilient long-term activity. Our staff include international technical experts in design, engineering, and construction, who are at the forefront of their fields in research, academic, and practical developments in order to best deliver excellence for our clients.

## Extraction

We undertake the critical operations involved in the extraction process, including loading, hauling, drilling and blasting, plant, and logistics capacity for the mine. Our highly-trained, experienced staff utilise advanced technical instrumentation, computing, and equipment in order to deliver the

best possible results for our clients across a diverse array of active sites while limiting the environmental impact.

## Technology

We operate a complex fleet of modern equipment, including 10 ADTs, 4 excavators, 3 dozers, 3 front-end loaders, 2 graders, 2 off-road mobile batching plants, 3 rollers, 2 Kleeman crushers, and 3 screening plants. Our staff are highly specialised in their training and are familiar with the engineering and complexities of our equipment, being able to operate and maintain both effectively and safely.



**2020** Awarded GAC Mining services contract to mine 1.6 million tonnes bauxite over 9 months. A first for a 100% Guinean owned company.

**2021** Awarded GAC Mining services contract to mine 4.5 million tonnes bauxite over 14 months. Another first for a 100% Guinean owned company.



## Creating the bedrock of responsible Guinean resource procurement.

Sustainable mining has an enormous role to play in securing Africa's future, and GPC is at the heart of large-scale operations in the sector for many clients across diverse, long-term projects.

## Why choose GPC Mining?

With a wealth of knowledge and experience from a highly qualified, experienced and skilled team, GPC enjoys a high referral rate and repeats business from their valued clients.





## Building the future of Guinea, and forging ahead for a better world.

Construction is vital to our growth, both as a nation and as a collective global community. In order to best prepare for the future, we help lay the foundations – literally – for our next generations, with projects ranging from real estate to roads, from academic institutions to multinational mining operations. We are well-positioned to complete a range of construction projects, with our history of work proving timely and budget-efficient delivery.

### Civil Works

One of the core tenets of our continued growth is to give back to communities that help us do what we do. Through initiatives that prioritise innovation, sustainability, and community impact, we have completed projects such as roads and water supply systems. Our approach to civil engineering projects encompasses not only the construction of durable and efficient infrastructure but also a deep commitment to safety, environmental conservation, and the enhancement of public spaces. By integrating state-of-the-art technology, eco-friendly materials, and community-centric planning, we strive to deliver civil works projects that are not only functional but also contribute positively to the societal and environmental landscape, setting new benchmarks in the Guinean construction industry for quality, safety, and sustainability.

### Infrastructure

Bringing prosperity to Guinea starts from the ground up. We have framed our growth around providing a sustainable infrastructural framework that will hold strong and contribute to the long-term economic growth of the country. With our world-level, internationally-experienced engineering

and planning teams, we have a proven track record of on-time, on-budget delivery, with excellent regulatory and HSE compliance.

### Real Estate

Guinea is growing rapidly, and to accommodate our developing population, we have been active in the design, development, and continued management of a broad range of real estate projects. We are currently building the Library at the University of General Lansana Conté at Sonfonia, and we have provided enduring value not just for clients, but for entire communities and cities. Beyond our urban works, we have provided development of camps and similar working outfits for clients on mining sites and logistics centers.



## Construction achievements

### Rio Tinto

Design, construction and commissioning of various site infrastructures and facilities including platforms, roads, water supply and building infrastructures.

### Rio Tinto - Simfer

13 hectare Urban Park construction project in Conakry, including sports fields, green spaces, a walking trail, parking, and landscaped relaxation areas.

### Ministry of Higher Education Projects

Construction of the University Library of General Lansana Conté University of Sonfonia, Conakry. Execution of access and platforms, framework, waterproofing, and more.

### Ministry of Infrastructure and Transportation

Construction and asphaltting of 9 kilometres of urban roads in the municipalities of Dixinn, Ratoma and Coyah.

### GAC

7 kilometre railway extension at the port and mine.

### MANAGEM

Concrete structures and related works for TRI-Kgold mine TSF Phase 1.

### CBG

Water sprinkler system for the Parawi project.

### Total

Construction and Installation of fuel depot with 18 Fuel Containers at TRI-K Gold Mine.





## Connecting Guinea, powering Africa.

The world relies on logistics to facilitate modern trade. Connecting Guinea to the global supply chain positions us as a critical part of this infrastructure, and a vital contributor to the broader market.

Having been active in logistics since 2012, we have an overarching mission of connecting the conduits of production in Guinea and the broader West African region to the global economy. In order to do this, we must action and deliver on an ambitious vision to supply effective and consistent logistics services country-wide. This is a statement of intent, and we look towards this mission with optimism, ready to redefine Guinean industrial excellence.

## Freight and transit

Our vertically-integrated logistics channels help action the second-level production from many of our active sites in the mining and construction sectors. Beyond this, we are a core partner both for companies operating in Guinea, and globally-networked multinationals who rely on our professional-level services to maintain the functioning status of their revenue generating operations.

## Supply chain

GPC plays a pivotal role in the continued transformation of the Guinean supply chain. With the nation being a nexus for vital resources and trade across the West African region and economy, our company leverages the Guinea's unique geographic and economic strengths to streamline logistics, enhance efficiency, and create robust connections between local producers and international markets. Our innovative approach in logistics management, incorporating modern technology and sustainable practices, not only

bolsters Guinea's position in the global supply chain but also sets new standards in reliability and speed. Through our extensive network, tailored solutions, and deep understanding of both local and international trade dynamics, GPC is not just a participant but a key influencer in the supply chain, driving growth and prosperity in Guinea and beyond.

## Fleet

Our fleet is versatile and powers our logistics capabilities. We own over one hundred transport trucks and light vehicles, including 53 horse and trailer, 37 tipping trucks, 3 water trucks, 23 LUV, 3 buses, and 4 CAR VIP.

## Projects undertaken

 **2022: SIMFER/Rio Tinto transportation contract**

Three-year contract signed in 2022 with SIMFER/Rio Tinto for land transportation and delivery of goods and heavy equipment to their various operational sites in Guinea.

 **2019: ongoing contract with Bolloré Logistics**

Transport of 50,000 containers (20ft and 40ft) from storage area to the terminal port at Conakry.

 **CWE: China International Water and Electric**

The transport of over 100,000 tonnes of material for the building of a hydro-electric power plant at Souapiti on the Konkoure river.





## PROJECTS

GPC prides itself on its versatility; we have undertaken projects alongside government authorities and multinational companies, strongly supporting the economies of Guinea, Africa, and the world.

We are redefining the future of Guinea with a diverse portfolio of mining, construction, logistics, and other trading projects, each a testament to our commitment to innovation, sustainability, and excellence. With thanks to our founders' vision and the great work of our people, we can be proud to say our contributions to projects has led directly to improvements in living for the citizens of Guinea and people worldwide.

### Real Estate

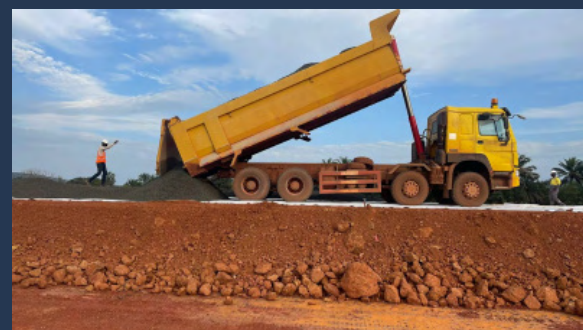
Influencing urban landscapes and community living with a portfolio that spans high-end residential complexes, state-of-the-art commercial hubs, academic institutions, and sustainable mixed-use developments. Active across Guinea, we create the future-enabling spaces for our next generations.

### Industry and Mining

By integrating the latest technological advancements and adhering to the highest standards of safety and environmental responsibility, we not only build infrastructure, but also shape the future of mining in Guinea, fostering growth and setting new paradigms in industrial excellence.

### Civil Works

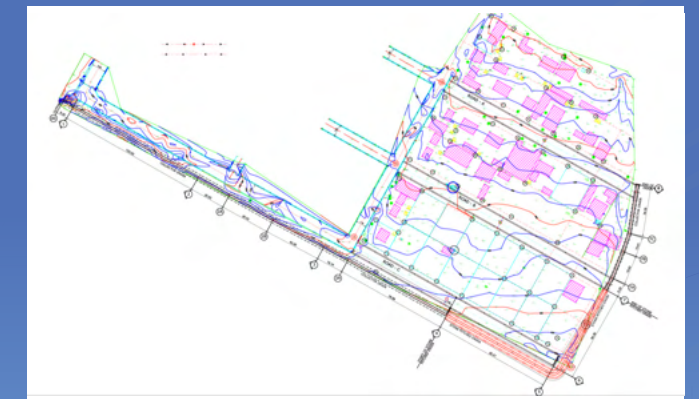
Builders of the future, playing a critical role in shaping the infrastructure of tomorrow through our extensive civil works projects and involvement across multiple avenues of construction for the nation and for pivotal mining works.



## TECHNOLOGY

GPC has varied experience of projects across the Republic of Guinea. We lead with the introduction and testing of new equipment and technologies to ensure we deliver best practices and globally-competitive industry solutions. Through this we continuously improve safety, productivity, and limit our environmental impact.

Our team comprises technical experts in design, engineering, and construction from across the world, who are in touch with research developments and advancements within their sectors. This ensures GPC delivers some of the best and most innovative solutions for clients.



**15 years**  
Innovation and industry leadership



"We aim to be the primary reference of Guinean quality and excellence as a leading, fully Guinean-owned company"  
Amadou Kaba, CEO



## ENVIRONMENT & SUSTAINABILITY

Long-term sustainable practices are an inherent part of our founding vision. We have spent years refining how we can limit our environmental impact, and our ESG compliance is at the forefront of our operational methodology and management initiatives.



We are deeply committed to environmental stewardship, recognizing our responsibility to the planet in every project we undertake. Our approach encompasses sustainable development, efficient resource utilization, and minimizing our carbon footprint, all while innovating in eco-friendly practices. We actively invest in renewable energy, waste reduction, and conservation initiatives, understanding that a healthy environment is critical for the long-term success of our communities and our business. Through collaborative efforts

with local communities and global partners, we are dedicated to preserving natural resources and fostering a sustainable future for generations to come.

### Sustainable usage

Re-use is a governing principle of ours, innovatively re-purposing materials and resources across our projects to reduce waste, conserve energy, and support sustainable development in every facet of our operations.

### Resource Rehabilitation

We are dedicated to resource rehabilitation, actively restoring and revitalizing natural ecosystems impacted by our operations, ensuring a sustainable and harmonious balance between industry progress and environmental integrity.

### Together for Africa's future

Our continent is beautiful, diverse, and largely unspoiled, and we intend to keep it that way. We respect the unique environmental challenges and opportunities present in Africa; we look towards a future where this beauty and diversity can flourish.

We are preparing for the long-term, but we can't do it alone. We want you to be part of our change, and we welcome people who are passionate about bringing around a better world for all.



## HSE

We have a perfect safety record, and we don't intend to change that.

Health and safety are more than priorities – they are fundamental values embedded in every aspect of our operations. We are committed to maintaining the highest standards of safety and well-being for our employees, contractors, and the communities we serve. Through rigorous training, strict adherence to industry best practices, and a culture that empowers every individual to prioritize safety, we strive to create an environment where health and safety are intrinsic to our success and everyone's responsibility.

### Safety initiatives

We are actively investing in safety initiatives, continuously enhancing our protocols and training programs to ensure a secure and injury-free environment for our employees, customers, and partners.

### Corporate Social Responsibility

CSR is a cornerstone of our identity, reflecting our commitment to ethical practices, social equity, and environmental sustainability. We strive to make a positive impact in the communities where we operate, through initiatives focused on education, community development, and environmental conservation.

### Company initiatives

As part of our long-term compliance and development of our safety priorities, we intend to build on these principles in line with the most stringent of standards in a company-wide endeavour to define Guinean excellence in industry.



We are incredibly grateful to the amazing people who, every day, continue to deliver excellence and prove the strength of Guinean industry on the world stage.

GPC places people at the core of its ethos, recognizing that our success is intrinsically linked to the wellbeing of the communities we serve and the health of our staff. We are committed to fostering inclusive growth, diversity, and empowerment across all our operations and for all stakeholders.

Our work doesn't end here. Even with a remarkable HSE record – including one million work hours LTI free at our Simandou project – we must be proactive to ensure the continued safety of our people and long-term compliance in line with all modern standards of HSE in our active industries.



"Many companies would be extremely proud to claim our incredible safety record"

Amadou Kaba, CEO





T2, Kipé Commune de  
Ratoma, Conakry, Rép.  
Guinée

[gpc-groupe.com](http://gpc-groupe.com)



**Certificate of Registration**  
This is to certify that the Quality Management System of  
**Guineenne de Prestation et de Construction Groupe S.A. [GPC Groupe S.A.]**  
T2, Kipé Commune de Ratoma, Conakry, Rép. Guinée  
has been assessed and registered by TNV as conforming to the requirements of:  
**ISO 9001:2015**  
(Quality Management System)  
For the following Scope  
Construction Service and Infrastructure Development

TNV is accredited by International Accreditation Service (IAS), Status of Certificate can be verified on [www.iasinc.com](http://www.iasinc.com)

Certificate Number	2168401812201	Initial Issue Date	01 <sup>st</sup> Apr. 2024
Current Issue Date	01 <sup>st</sup> Apr. 2024	Validity of this Certificate	31 <sup>st</sup> Mar. 2027
1 <sup>st</sup> Surveillance Date	01 <sup>st</sup> Mar. 2025	Recertification due on	31 <sup>st</sup> Mar. 2027
2 <sup>nd</sup> Surveillance Date	01 <sup>st</sup> Mar. 2025	Revision No./Date	00
Issue No.	00	IAF Code	28

Prayesh Singh, Director  
TNV System Certification (P) Ltd.  
C-20, Udhokanagar, Gurgaon, India

**MANAGEMENT SYSTEM CERTIFICATE**

IAS ACCREDITED MEMBER 154 IAF